

clara lionel
foundation



2019
ANNUAL
REPORT

LETTER FROM OUR FOUNDER & EXECUTIVE DIRECTOR

Dear Friends of CLF,

2019 was a milestone year for CLF in that we crossed the threshold of over \$24M raised and more than 100 projects supported since the inception of the organization. Across all of our programs, our impact was both wide and deep. In education, we saw our work in rural Senegal come to life with the opening of three beautiful new primary school classrooms. We brought together 17 incredible young leaders from the Caribbean and South America to supercharge their learning potential at our first-ever Global Scholars Program IN NYC. We embarked on our second year of partnering with CAMFED to provide access to education for thousands of young girls in Malawi. And CLF provided job opportunities to these girls that resulted in access to HIV testing and health care services for more than 4,000 people.

In 2019, Hurricane Dorian wreaked havoc on the Bahamas. CLF began working with on-the-ground partners immediately to assess conditions and needs, quickly deploying more than \$1 million in emergency grants to support direct logistical support, mobile emergency medical services, and the immediate delivery of food and supplies.



2019 was a landmark year for CLF.

At the same time, we continued to ramp up our emergency response and preparedness work with the launch of a climate resilience initiative aimed at changing how the world responds to natural disasters. After years of supporting emergency and disaster response efforts, particularly in the Caribbean, it had become abundantly clear that a new model was needed. We created "partnerships for preparedness" with organizations and suppliers to build long-term and sustainable alliances that prioritize the needs of women and girls through infrastructure hardening projects, gender-integrated emergency response planning, and local capacity building. We began piloting projects to stand up as holistic examples of preparedness as part of a more effective model that centers marginalized communities and gives individuals the agency to better withstand the inevitable. Our work in the emergency response and preparedness space will continue to be a major priority for us in 2020. Because we're not working to just change the solutions, we're working to change the whole approach.

Our vision is ambitious, but thanks to our incredible donors, grantees, partners, corporate sponsors and the team at Fenty Corp, we know it is achievable.

With gratitude,

Robyn "Rihanna" Fenty, *Founder*

Justine Lucas, *Executive Director*

OUR MISSION

CLF funds groundbreaking education and emergency pre- paredness and response programs around the world.

The Clara Lionel Foundation (CLF) was founded in 2012 by Robyn "Rihanna" Fenty in honor of her grandparents, Clara and Lionel Braithwaite. CLF is shifting how the world responds to natural disasters through emergency preparedness and community resilience projects. CLF's education work tackles barriers to access through holistic initiatives around the globe. Through the voices of Rihanna and her fans, CLF also advocates for policy and systems change while mobilizing people to take action in response to the world's injustices.



OUR WORK
AT A GLANCE



Africa

- * 🏠 CAMFED Malawi
- * The Elizabeth Taylor AIDS Foundation (ETAF) Malawi
- * Global AIDS Interfaith Alliance (GAIA) Malawi
- ♡ Human Rights Watch (HRW) Cameroon
- 🏠 International Rescue Committee Zimbabwe
- * Le Korsa Senegal

Caribbean

- 🏠 Airlink Bahamas
- 🏠 All Hands & Hearts (AHAH) Dominica
- * Charles F. Broome Primary School Barbados
- * Combermere Secondary School Barbados
- 🏠 Direct Relief Bahamas
- 🏠 Engineers Without Borders-USA (EWB-USA) Belize, Dominican Republic,
- 🏠 Information Technology Disaster Resource Center (ITDRC) Bahamas
- 🏠 International Planned Parenthood Federation/ Western Hemisphere (IPPF/WH) Belize, Dominican Republic
- * Operation Triple Threat (OTT) Barbados
- ♡ Queen Elizabeth Hospital (QEH) Barbados
- * St. Michael Secondary School Barbados
- * St. Paul's Primary School Barbados
- 🏠 Team Rubicon Bahamas
- * Westbury Primary School Barbados
- 🏠 World Central Kitchen Bahamas

United States

- * Jumpstart Los Angeles

Middle East

- ♡ Save The Children Lebanon

Global

- * Global Scholarship Program

- * Education
- 🏠 Emergency Preparedness and Resilience
- ♡ Legacy & Special Projects



Since 2012, we have raised over than \$24 million and supported more than 100 projects.



In 2019:

\$2.9M

Invested

24

Grantee Partners

11

Countries

+ 4,000

People tested for HIV in Malawi

+ 7,000

Students given access to education

5

Schools rebuilt or refurbished

17

Global Scholars

We put philanthropy to work
in a strategic way to help
vulnerable communities
better withstand disasters
before they hit.



In 2019, we
invested more than
\$1.8 million
in emergency
preparedness
and response
efforts, including
Hurricane Dorian
in the Bahamas.

Every year, more than 200 million people globally are affected by climate change-related natural disasters. More than 75 million children and young people are affected with 26 million people pushed into poverty. The frequency and intensity of natural disasters have increased due to climate change. It impacts every country, on every continent. That means more people are at risk—particularly marginalized communities—and economic damage resulting in the hundreds of billions of dollars.

We believe emergency response efforts are not adequately equipped to take on this increasing challenge and are stuck in an antiquated model that is largely reactionary, uncoordinated and short-lived. Because funds are largely raised reactively—that is, after the disaster has happened—donor fatigue inevitably sets in and people's attention ends up disappearing as quickly as the news cycle, leaving those impacted forever left behind to pick up the pieces of their lives outside of the public eye.

To address this, CLF launched the Climate Resilience Initiative, an initiative focused on investing in multiple dimensions of emergency preparedness and scaling solutions to the problems of climate change. Our hope is that other organizations and multi-sector actors will adopt this new model. Ultimately, with widespread adoption and continuous and collective innovation, we can all be part of a new global effort to protect the world's most fragile ecosystems and vulnerable populations.

Hurricane Dorian Response

Hurricane Dorian struck the Bahamas on September 1 as one of the strongest Atlantic storms in history, and the strongest ever to hit the Bahamas. Almost immediately, we deployed more than \$1 million in emergency grants to on-the-ground partners to support relief efforts that included rebuilding critical healthcare facilities, mobile medical care, distribution of food in hard-to-reach areas, direct logistical support, portable satellite communications systems, and ongoing needs assessments and waste management.



" When we got to the school, the stage was gone, the roof was gone, it was devastating. Now that it is rebuilt, it is where people that do not have a safe place go. "

Endira Thomas,
Second Grade Teacher,
Paix Bouche Primary School,
Dominica



Refurbishing Dominica's Schools into Emergency Shelters

When Hurricane Maria hit Dominica, damaging nearly 90 percent of the island's buildings, CLF moved quickly to partner with All Hands and Hearts—Smart Response to begin recovery efforts. Our work with All Hands and Hearts to rebuild the Paix Bouche and Morne Prosper primary schools in Dominica transformed the nearly-destroyed schools to not only safe learning environments for the area's youth, but also hurricane evacuation shelters for the surrounding community.



In the aftermath of disasters,
women and girls face
disproportionate threats
to their health.



CGI Action Network Launch

In June, CLF Executive Director Justine Lucas, alongside Secretary of State Hillary Clinton, announced our partnership with The Planned Parenthood Federation/Western Hemisphere Region (IPPF/WHR) and Engineers Without Borders USA at the CGI Action Network on Post-Disaster Recovery meeting in St. Thomas, U.S. Virgin Islands in June.

Hardening Reproductive Health Clinics in the Caribbean

Health facilities are a linchpin of emergency preparedness, particularly when it comes to addressing the health needs of women and girls at a time when they are most vulnerable. In addition, they serve as response hubs immediately after a disaster and are cornerstones of long-term recovery, providing a localized response that is rapid, cost effective, and led by communities. In order to play these roles well in regions most vulnerable to extreme weather events, health facilities must have resilient infrastructure, evidence-based emergency response plans, and trained and committed staff.

CLF launched a partnership with International Planned Parenthood Federation/Western Hemisphere Region (IPPF/WHR) and Engineers Without Borders USA (EWB-USA) to strengthen the response capacity and harden the existing infrastructure of local sexual and reproductive health (SRH) health care facilities in the Caribbean. After completing due diligence and assessments across five countries, we chose clinics in the Dominican Republic and Belize as the first two locations for the partnership's pilot projects.

Ultimately, our vision is that through lessons learned from pilot partnerships such as this one with IPPF and EWB-USA, as well as other pan-Caribbean investments, we can be a driving force behind a new model of climate preparedness that can be replicated and scaled to enable other high-risk regions around the world to be better prepared to withstand extreme weather events. The result? Communities across the Caribbean and beyond will experience fewer shocks to their livelihoods following a natural disaster.

The Caribbean is uniquely vulnerable to the devastation of climate change, including increasingly frequent and severe hurricanes. The risk of climatic events is compounded by poverty and inequitable access to healthcare and education.



"What we're focused on with this partnership is making these clinics resilient and retrofitting them now, so that when a hurricane or another event like a flood or earthquake happens, they're able to be responsive and open up to serve their clients very quickly."

Kevin Andrezejewski,
Senior Program Manager,
Engineers Without Borders
USA



Since 2016, CLF has invested nearly \$5 million in supporting access to quality education around the world.



With more than 263 million young people out of school globally, a significant part of a generation is at risk of getting left behind. Access to quality education is not only a basic human right, but it is a critical component of a foundation for a more productive and happier life. In 2019, our education work took us to Barbados, Malawi, Senegal and the United States.

Improving Educational Experiences in Barbados

Our CLF Micro Grants Program in Barbados, in partnership with the nonprofit organization **Operation Triple Threat (OTT)**, supports primary and secondary schools in Barbados with funding for youth development projects and academic programs. From the refurbishment of a school library to providing science, sports and music equipment, we helped our partners make a more tangible difference in the lives of the country's students.





Building a Better Future for Girls in Malawi

In Malawi, we take a 360-degree approach to expand access to quality girls education. Through our second year of partnership with CAMFED, we helped fund secondary school scholarship packages for young women in eight districts to cover school-related expenses such as uniforms, boarding fees, supplies and solar lamps allowing them to study at night.

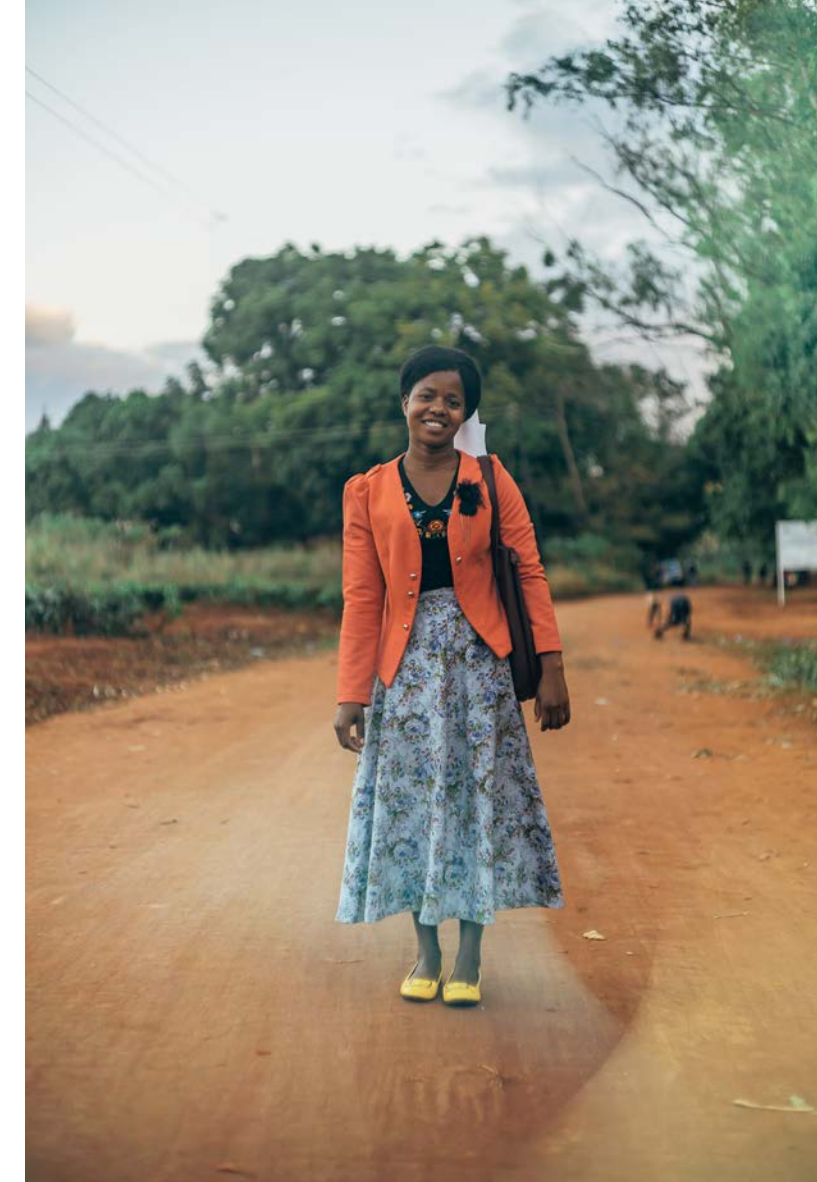
Access to Bicycles

In some of the countries where we work, distance and a lack of safe transportation are some of the biggest challenges girls face when it comes to attending school. Our bicycle program, started in 2018, continued to make it easier for nearly a thousand students to travel safely between home and school. What's more, we supported the training of these young women with the skills and know-how to care for their own bikes, with a number of them going on to generate income as bike mechanics in their communities.



Support for Secondary School Transition

Our partnership with the CAMFED is enabling young women across Malawi to not only attend school, but also fulfill their potential by helping transition them into promising next steps after graduation. As students transition from secondary school towards employment or higher education, our support allows them to access professional development opportunities so they can continue to build skills while developing their postgraduate plans.



Hope Nazombe

The end of school is a time when girls in many parts of the world are particularly vulnerable. That's why 22-year-old Hope Nazombe decided to become a "Learner Guide" through CAMA, CAMFED's alumni network program. Hope provides training and support in her village in Malawi to girls at this critical juncture, empowering them with the skills and knowledge to help them transition from school into a successful career.

" Working as an HIV Diagnosis Assistant is important because people now know their HIV status. If they are positive, we help them not transmit to others by talking to them about prevention measures. "

Cristina, Malawi



Pathways to Employment Through HIV Testing

Working with partners The Elizabeth Taylor AIDS Foundation and Global AIDS Interfaith alliance, we designed a project in the Mulanje district of Malawi to provide employment for CAMFED graduates as HIV testers. In Malawi, access to HIV/AIDS testing and care are enormous challenges, especially in rural districts. Our program is simultaneously bridging a critical access gap while helping the district work towards achieving the United Nations' 90-90-90 HIV treatment targets.

In the first year of its program employing HIV testers in Malawi, CLF helped provide access to HIV testing and health care services for more than 4,000 people.



Strengthening Schools in Tambacounda, Senegal

Despite significant progress, economic growth, and decades of political stability, Senegal has continued to struggle with serious development challenges, particularly in the country's rural regions where less than 50 percent of the female population can read and write. In fact, illiteracy is one of the biggest contributing factors to intergenerational poverty in Senegal, and the number of out-of-school children has stagnated.

That's why, for the past two years, one of our core programs in the country has been focused on expanding access to primary education for children living in the country's rural areas. We took on the challenge with our partner, Le Korsá—a dynamic non-profit organization that works directly with dedicated doctors, teachers, and students in Senegal to improve lives—to build three new schools in Tambacounda, a sparsely-populated part of the country where illiteracy is one of the biggest contributors to poverty. Built with the help of local artisans and laborers, these new classrooms replaced existing, leaky thatched-roof structures and are impervious to the area's strong winds and heavy rains, ensuring that students from the community can attend school in a safe environment and continue classes no matter what the weather.

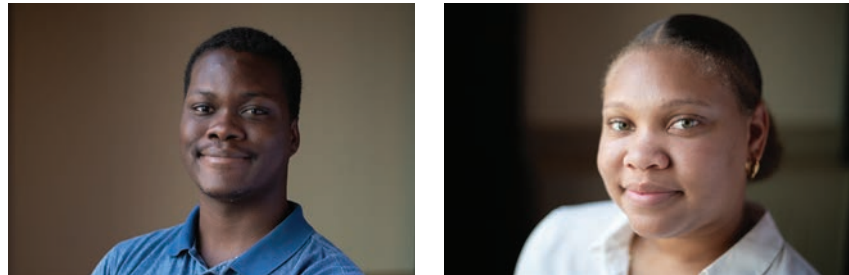


" The children now have a safe place to study and learn and hopefully can take this knowledge to help advance in their life, our family and our village. "

Abdoulay Kah,
father of a student in Tambacounda

CLF Global Scholarship Program

Our Global Scholarship Program supports exceptional students from the Caribbean and Latin America who wish to pursue higher education in the United States. While matriculating, our 17 scholars actively engage with CLF throughout the year and represent some of tomorrow's most promising leaders.



"I want to be one more doctor in my home country to make a difference to shorten that wait time even if it's by 20 minutes"

Juliene Hinds,
CLF Global Scholarship recipient
from Guyana



Global Scholars Summit

In April, we held our first "Agents of Change" Global Scholars Summit in New York City. The summit was designed to educate, inspire and connect the program's seventeen dynamic and talented students with the resources to help them more successfully navigate their college careers. Throughout the long weekend, scholars joined each other in workshops and listened to engaging personal and professional stories from leaders from a variety of fields. The young men and women learned about how to connect their personal values with their professional paths, as well as participated in a speed mentoring session where they continued to network with individuals and receive career advice.

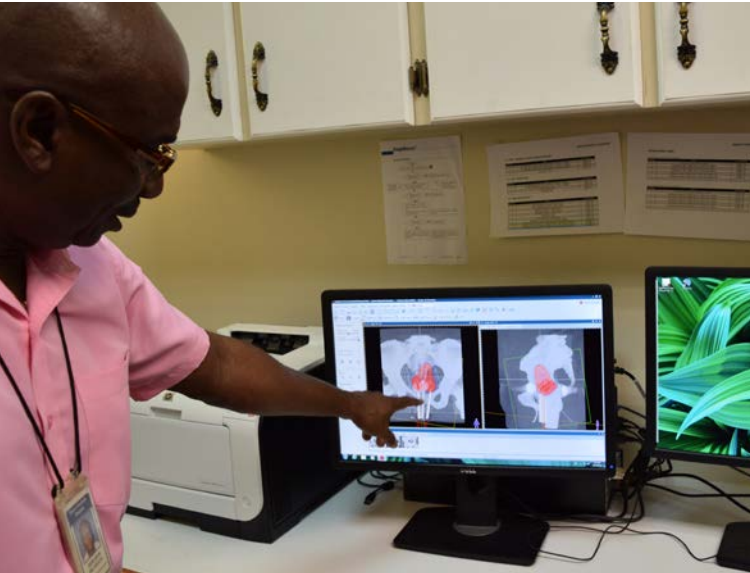


Providing Equitable Opportunities For Children in the United States

We believe that every child deserves the same opportunity to fulfill her potential no matter where she lives. Our partnership with U.S.-based Jumpstart is helping ensure children in Compton, California are able to fully participate in the organization's language, literacy and social-emotional preschool program at the YWCA's Compton Child Development Center. At the same time, our sponsorship provided a team of six college student volunteers, affectionately called "Team Marvel" by members of the program, with more than 40 hours of training in early education theory and ongoing coaching so they can effectively deliver the Jumpstart curriculum.



LEGACY PROJECTS



CLF continues to provide funding to sustain several legacy projects, including the foundation's inaugural project, The Clara Braithwaite Center for Oncology and Nuclear Medicine at Queen Elizabeth Hospital (QEH) in Barbados. The Center was established in 2012 with a \$1.75M investment in QEH's first modern radiotherapy machine--the Equinox External Beam Therapy System as well as additional radiotherapy equipment. Today, CLF supports QEH's pediatric units while continuing to collaborate with the hospital on the Center's long-term sustainability. CLF's legacy projects also include support for Syrian refugee families in Lebanon and the reporting of human rights violations in Cameroon.



DIAMOND BALL




Our sixth annual Diamond Ball took place on September 12 at Cipriani Wall Street in New York City.

Hosted by Late Night show host, Seth Meyers, the event featured performances by ten-time Grammy award-winning artist Pharrell, and songwriter and music producer, DJ Khaled. Mia Mottley, Prime Minister of Barbados, and civil rights activist, Shaun King, both received the 2019 Diamond Ball Award in recognition of their humanitarian and social justice work. Guests included Cardi B, Karlie Kloss, Migos, A\$AP Rocky, Carmelo Anthony, Kehlani, 21 Savage, Normani, Jodie-Turner Smith, Danny Green and many others. One of the biggest highlights of the evening came at the end of the evening when DJ Khaled was joined on stage by an impressive group of surprise guests that included 2 Chainz, A\$AP Ferg, Fat Joe, Megan Thee Stallion, G-Eazy and more.



PRESS

In 2019, news of CLF's work and impact reached more than 2 billion people.



VOGUE
PARTIES
At Rihanna's Diamond Ball, the Pop Star Shone Brighter Than Ever
BY LILAN RANZI
November 18, 2018

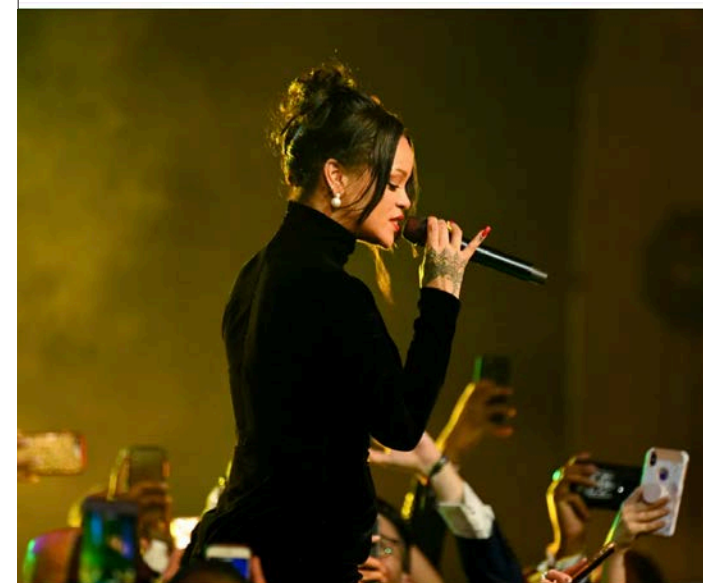



Photo: Getty Images for Diamond Ball


"At least when Rihanna sings 'B*tch Better Have My Money,' you know she needs it for a good cause!" joked Seth Meyers, the evening's master of ceremonies. The audience buckled with laughter. Unlike her Instagram handle might suggest, Riri is more good gal than bad. In 2012, Rihanna founded the Clara Lionel Foundation; a nonprofit dedicated to education and emergency response programs (specifically for natural disasters) around the world. The charity, named after Rihanna's grandparents Clara and Lionel Braithwaite, hosts a blockbuster gala each year during Fashion Week and this most recent event, scheduled the day after the Fenty spectacular at the Barclay Center, was perhaps the best yet.

In attendance was a slew of pretty young things and in his opening remarks, Meyers remarked on the diversity among the crowd who had descended upon Cipriani Wall Street for the occasion. "I go to a lot of these charity fundraisers and it's usually a bunch of old white dudes," said the *Late Night* host. "But looking around, it seems like I'm the only old white guy..." He wasn't incorrect; a scan of the crowd revealed the likes of Cardi B, Karlie Kloss, Offset, ASAP Rocky, Carmelo Anthony, Megan Thee Stallion, Kehlani, 21 Savage, Normani, Meek Mill, Jodie Turner-Smith, and Slick Woods.

But among all the luminaries were two very special guests who would be honored by Rihanna herself and CLF's executive director Justine Lucas; the latter presented civil rights activist Shaun King with an award and shortly after, Rihanna took to the stage, resplendent in her vampy Givenchy couture look, to honor Barbados's Prime Minister Mia Mottley. "She's the first woman to lead the Barbados Labour Party, the first female prime minister of Barbados," said Rihanna. "And tonight, she will be the first Prime Minister to attend 2 Chainz's birthday party!" She was probably right about that. Mottley was humbled but rather than accept praise for herself, she chose to focus on her country's national treasure (Rihanna) and ended her acceptance speech inviting all those in the crowd to come visit Barbados.



BUSTLE
Rihanna's Diamond Ball Should Be The Blueprint For Sustainable Fundraising
By KAYLA GREAVES | Sep. 13, 2019 | f



Dimitrios Kambouris/Getty Images Entertainment/Getty Images

When Rihanna held her first Diamond Ball in 2014 to benefit the [Clara Lionel Foundation](#) — an organization that supports education and emergency response programs around the world — the idea was never to raise funds to fit the traditional nonprofit mold. The intent was always to flip the script. "Our work is really in a space of innovation," Justine Lucas, executive director of the CLF, tells me. "We're really trying to shake up some of the challenges out there."



FAST COMPANY
09-05-19 | FUTURE OF PHILANTHROPY
How Rihanna's foundation is rethinking disaster response
The Clara Lionel Foundation is giving to help the victims of Hurricane Dorian, but it's trying to make our response to disasters proactive, by making the Caribbean resilient enough that we don't have to scramble to give every hurricane season.



Rihanna at Queen Elizabeth Hospital, Barbados. [Photo: courtesy The Clara Lionel Foundation]

f **t** **in** **m** **BY ADELE PETERS** 4 MINUTE READ

After Hurricane Dorian slammed into the Bahamas, destroying entire neighborhoods, the Caribbean-born singer Rihanna's foundation announced that it would give emergency grants to nonprofits providing food and medical kits to survivors. But the foundation is also separately rethinking the traditional approach to disaster response. As climate change makes disasters more common around the world—from hurricanes to wildfires—the organization wants to help communities become more resilient, rather than only rushing to respond after every event.

PARTNERSHIP HIGHLIGHTS



Our partnerships are helping raise critical funds to support our work around the world.

FENTY BEAUTY

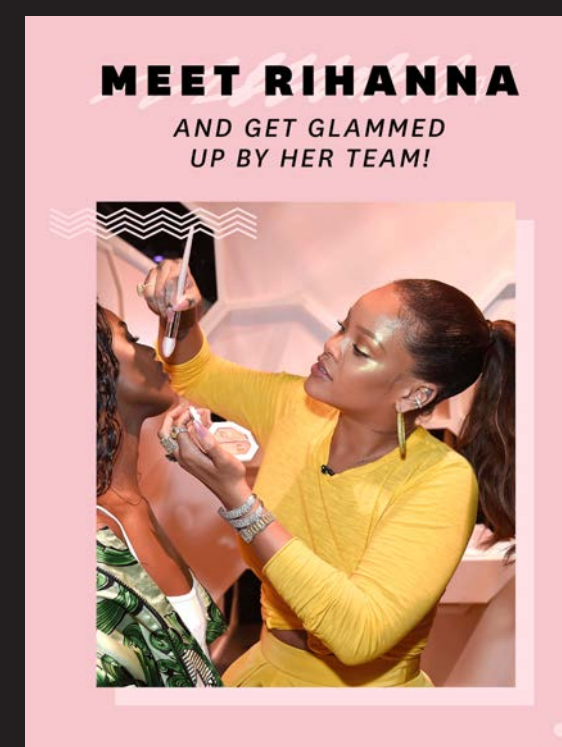
Continuing its support of CLF for the second year in a row, Fenty Beauty launched the limited edition CLF Carry-All Makeup Organizer to benefit the foundation. Alongside the brand's Killawatt Freestyle Highlighter, 100% of every purchase from both products helps support our global projects.

SAVAGE X FENTY

In October, for National Breast Cancer Awareness Month, CLF and Savage X Fenty joined forces to raise funding for critical research to combat breast cancer, including triple negative breast cancer—a complex, aggressive and hard-to-treat form of the disease that tends to strike younger women.

OMAZE

CLF, Fenty Beauty and online fundraising platform, Omaze, teamed up in December to give one lucky fan the chance to meet Rihanna and experience a beauty makeover.



MEET RIHANNA
AND GET GLAMMED UP BY HER TEAM!

PARTNERS

Thank you to all of our partners who made our work possible in 2019.

Critical Mass



FENTY BEAUTY
BY RIHANNA

FENTYCORP



LIVE NATION

LEDE



ReedSmith
The business of relationships.™

ROC NATION

SAVAGE X FENTY
LINGERIE BY RIHANNA

The Chris and Loretta
Stadler Family Foundation

STANCE

UCLA Institute of the
Environment & Sustainability



BOARD OF DIRECTORS &
ADVISORY BOARD

Board of Directors

- Jay Brown
- Kawanna Brown
- Monica Fenty
- Robyn "Rihanna" Fenty
- Lukas Haynes
- Mai Lassiter
- Jessie Schutt-Aine

Global Advisory Board

- Evan Jehle
- Jennifer Rosales
- John Schroeder

Program Partners

Airlink
All Hands All Hearts
CAMFED
Charles F. Broome Primary School
Combermere Secondary School
Direct Relief
The Elizabeth Taylor AIDS Foundation
Engineers Without Borders-USA
Global AIDS Interfaith Alliance
Global Scholarship Program
Human Rights Watch
Information Technology Disaster Resource Center
International Planned Parenthood Federation/Western Hemisphere
International Rescue Committee
Jumpstart
Le Korsa
Operation Triple Threat
Queen Elizabeth Hospital
St. Michael Secondary School
St. Paul's Primary School
Team Rubicon
Westbury Primary School
World Central Kitchen

Donors*

Amazon
Amex
Anonymous
Armand de Brignac
Attention Capital
Barbados Tourism Marketing, Inc.
BET
Bob Washington
BSE Global
Cardi B
Christie & Joe Marchese
Christopher & Loretta Stadler
Dick Clark Productions
Essence
Facebook
Fenty Beauty
FFO
FWD think, LLC
Glam Seamless Hair Extensions
Granderson Des Rochers, LLP
Gregg Lemkau
Guccio Gucci Spa
Jack Dorsey
Jennifer Salke
John Herzog
Kendo Brands/LVMH
LePages 2000, Inc.
Live Nation
Meek Mill
Naturi Naughton
Naturi Star Inc.
Oilers Entertainment Group
Pretty Little Thing
Puma North America Inc
RBC Capital Markets
Reed Smith LLC
Robinson Cano
RocNation
Savage X Fenty
Sony/ATV Music Publishing
The Rubin Family Foundation
Tor Hermansen
Tyran Smith
Universal Music Group
William Morris Endeavor Entertainment, LLC

*Donors who gave \$25,000 or more between January 1, 2019 and December 31, 2019.



 clara lionel
foundation

claralionelfoundation.org