



SHIFTING HOW THE WORLD RESPONDS TO INEQUITY AND INJUSTICE

\$80M
RAISED

+150
PROJECTS FUNDED

+20
COUNTRIES

The Clara Lionel Foundation (CLF) was founded in 2012 by Robyn "Rihanna" Fenty in honor of her grandparents, Clara and Lionel Braithwaite. Rihanna serves as Ambassador Extraordinary and Plenipotentiary for her home country of Barbados and has received several awards for her philanthropic work including the Harvard Foundation's 2017 Humanitarian of the Year award and the 2020 NAACP President's Award.

WHAT WE DO

We focus on the effects of climate change on those most marginalized through preparedness and climate resilience projects.

We invest in partners making a tangible difference in the lives of students, both in and out of school.

We advocate for policy and systems change to improve the quality of life for communities across the globe.

LEGACY PROJECTS

We support a variety of high-impact initiatives focused on creating a more just and equitable world in response to significant and timely global issues.

Since March of 2020, CLF and our partners have given **\$47 million** in response to the global COVID-19 pandemic and the racial justice movement in the U.S.



COVID-19

\$36 million to support healthcare workers and organizations on the frontlines of the COVID-19 pandemic



RACIAL JUSTICE

\$11.5 million to 12 organizations across all 50 U.S. states fighting for racial justice and a full-scale systemic revolution

1 MILLION

MEALS PROVIDED

250

MENTAL HEALTH WORKSHOPS FUNDED

250,000

LGBTQ YOUTH PROVIDED WITH VIRTUAL MENTAL HEALTH SUPPORT

1,500

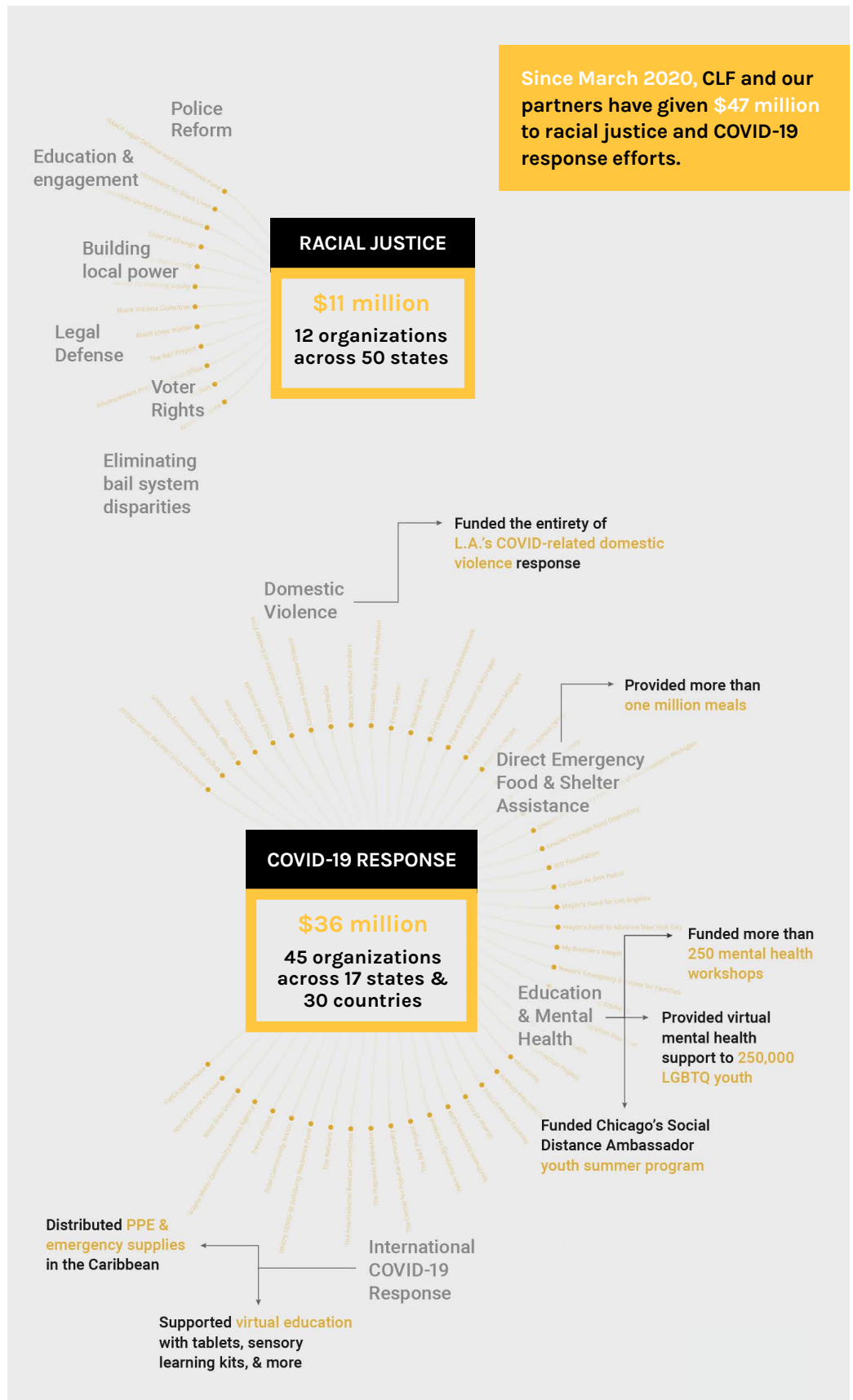
SURVIVORS OF DOMESTIC VIOLENCE SUPPORTED



Under our Legacy Projects pillar, we also continue to sustain several core ongoing projects, one of which is **The Clara Braithwaite Center for Oncology and Nuclear Medicine at Queen Elizabeth Hospital (QEH) in Barbados**. The Center was established in 2012 through the foundation's inaugural investment to provide state-of-the-art radiotherapy equipment. Today, we support QEH's pediatrics unit in addition to bolstering the Center's long-term sustainability.

2020 IMPACT HIGHLIGHTS

Since March 2020, CLF and our partners have given \$47 million to racial justice and COVID-19 response efforts.



EMERGENCY PREPAREDNESS AND RESPONSE

We harness the power of philanthropy to help communities prepare for and withstand disasters.

We're focused on bridging the humanitarian and climate sectors to alleviate poverty and support communities of resilience.

CLIMATE RESILIENCE INITIATIVE

Our Climate Resilience Initiative (CRI) is focused on addressing multiple dimensions of emergency preparedness while scaling solutions to the problems of climate change. Our projects, which range from school and health clinic infrastructure hardening projects to gender-integrated emergency response planning in the Caribbean, serve as models that can be replicated and scaled to enable other high-risk regions around the world to be better prepared to withstand extreme weather events.

We invest philanthropic dollars across three key strategic pillars:

1 ACCESS TO HEALTH

In partnership with International Planned Parenthood Federation/Western Hemisphere Region (IPPF/ WHR) and Engineers Without Borders USA (EWB-USA), we are working to strengthen the response capacity and harden the existing infrastructure of local sexual and reproductive health (SRH) health care facilities across multiple Caribbean countries. The project is currently being piloted in the Dominican Republic and Belize where the clinics serve a combined 180,000 people.

2 SHELTERS

Since the devastation of Hurricane Maria, we have been working with schools in the Caribbean to increase their self-reliance and prepare them for future natural disasters through the installation of renewable energy systems. In 2020, we are also supporting the hardening of two schools in Dominica and one in Barbados, impacting over 1,100 students.

3 COMMUNICATIONS

Through our partner Internews, we are assessing local information ecosystems and equipping media outlets in Barbados with the tools and skills they need to promote reliable, trusted and relevant information amidst COVID-19 and during times of disasters.





EDUCATION

We take a 360-degree approach to supporting girls education, post-graduation career transition, and girls' entrepreneurship.

We believe in the right to education as a weapon against injustice and inequality, and that every child, no matter where she lives, deserves the opportunity to fulfill her potential.

BARBADOS

Our Barbados program supports primary and secondary schools with funding for youth development projects and academic programs. Since 2016, we have awarded 12 grants to organizations and initiatives designed to improve the lives and education of young people across the island. In 2020, we supported over 3,282 Barbadian students.

MALAWI

Our work in Malawi, in partnership with CAMFED, is impacting more than 7,500 girls across seven districts. Our projects include supporting secondary school scholarships for young women; a locally-led bicycle donation program that includes entrepreneurship and skills training; micro grants for aspiring female entrepreneurs; a professional development program that helps young women successfully transition to a career; and, an HIV testing program that trains CAMFED graduates and others in the healthcare field.

GLOBAL SCHOLARSHIP PROGRAM

Our Global Scholarship Program supports exceptional students from the Caribbean and South America who wish to pursue higher education in the United States. While matriculating, scholars actively engage with CLF throughout the year. There are currently 17 scholars actively enrolled in the program. From completing community service projects to excelling in their majors, our Global Scholars represent some of tomorrow's most promising leaders.